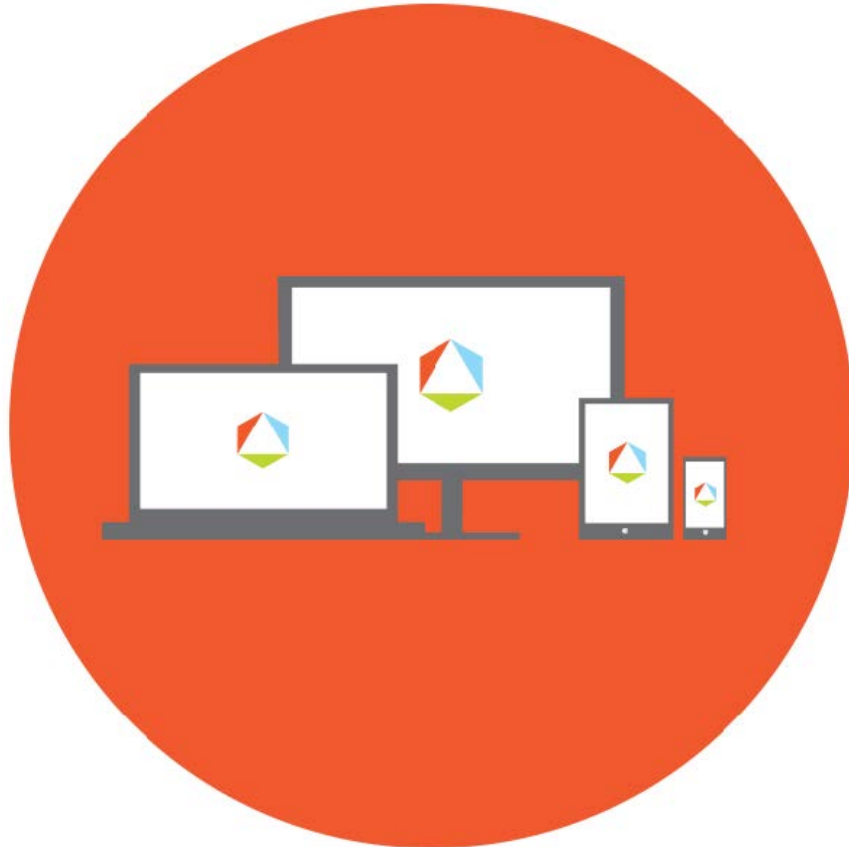




**FIRSTPATH**  
AUTISM



Data Sheet  
**Trial-by-Trial**  
[www.firstpathautism.com](http://www.firstpathautism.com)



# Trial-by-Trial Data

**LESSON:** \_\_\_\_\_

**Instructions:** Under "Trials", each box represents one trial. Fill in the child's response for each trial as one of the following: **(+)** for an independent correct response, **(-)** for an incorrect response, or **(P)** for a prompted response. It is not necessary to fill in the entire row of boxes for each session; it depends on the number of trials decided upon for that session. At the end of the session, count the total number of trials, and write it at the bottom of the box labeled **(+)** total. Then count the number of **(+)** responses, and write that at the top of the box labeled **(+)** total. You can now use this ratio to calculate the percentage of correct, independent responses for that session, and record it in the column labeled "%". For example, if you wrote 10 on the bottom and 3 on the top, it should look like "3/10", and would equal 30%.

DATE	TRIALS													+	%		
														TOTAL			