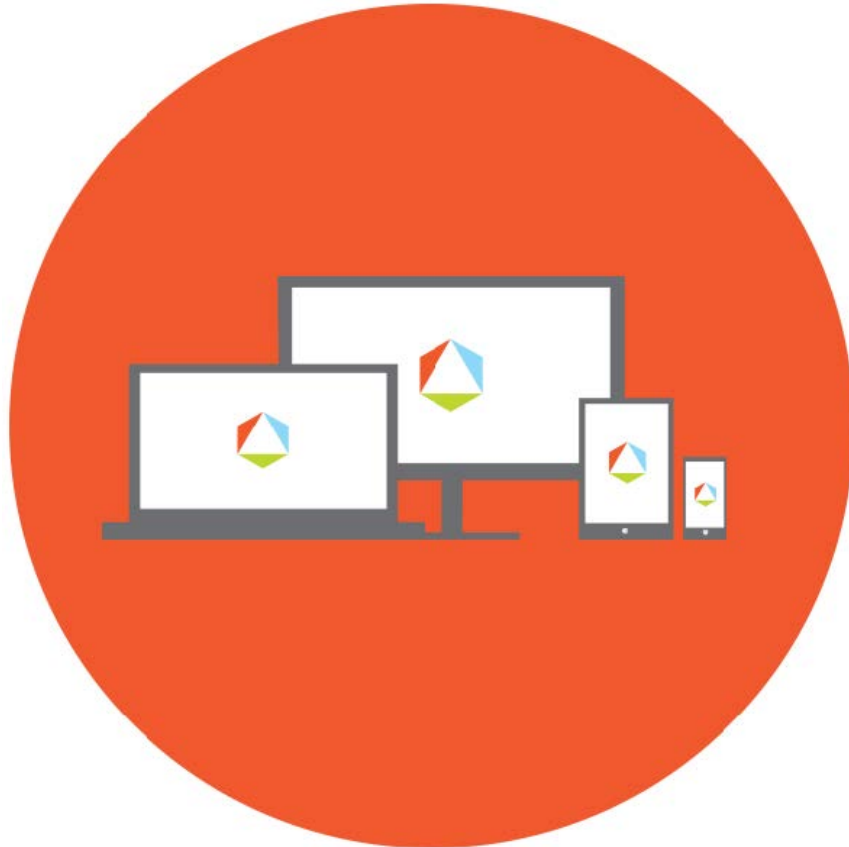




FIRSTPATH
AUTISM



Data Sheet
Toileting
www.firstpathautism.com



Toileting

Success in urinations (i.e., lack of accidents) 80-90% of the time while on a toileting schedule ...

Target	Intro MT*	Mastery RR**	Target	Intro MT*	Mastery RR**
1. of 30 minutes			21.		
2. of 45 minutes			22.		
3. of 60 minutes			23.		
4. of 90 minutes			24.		
5. Initiates using the restroom independently or asking to go***			25.		
6. Complete entire TA for toileting with 80-90% independence. ***			26.		
***targets 5 and 6 may be reversed in order; some children develop ability to complete routine prior to developing strong initiation behavior.			27.		
7. Generalize skills across 2-3 different restrooms/ environments			28.		
8. Demonstrates no more than 3 accidents per week across 90% of weeks.			29.		
9. Repeat steps for Bowel Movement training			30.		
10.			31.		
11.			32.		
12.			33.		
13.			34.		
14.			35.		
15.			36.		



16.			37.		
17.			38.		
18.			39.		
19.			40.		
20.					

* **Intro MT:** The date the target was introduced to the child

** **Mastery RR:** Is the date the child completed 3 consecutive random rotation trials at with 80-100% independence.

Maintenance: When all targets are mastered, reduce frequency of the presentation of the program to child systematically, ensuring that the child maintains skills by maintaining mastery scores of 80-100% before decreasing frequency further. (e.g. 5 times per week to 4 times per week for a month, to 3 times per week for a month to 2 times per week for a month, to once a week for a month, to generalized settings.)