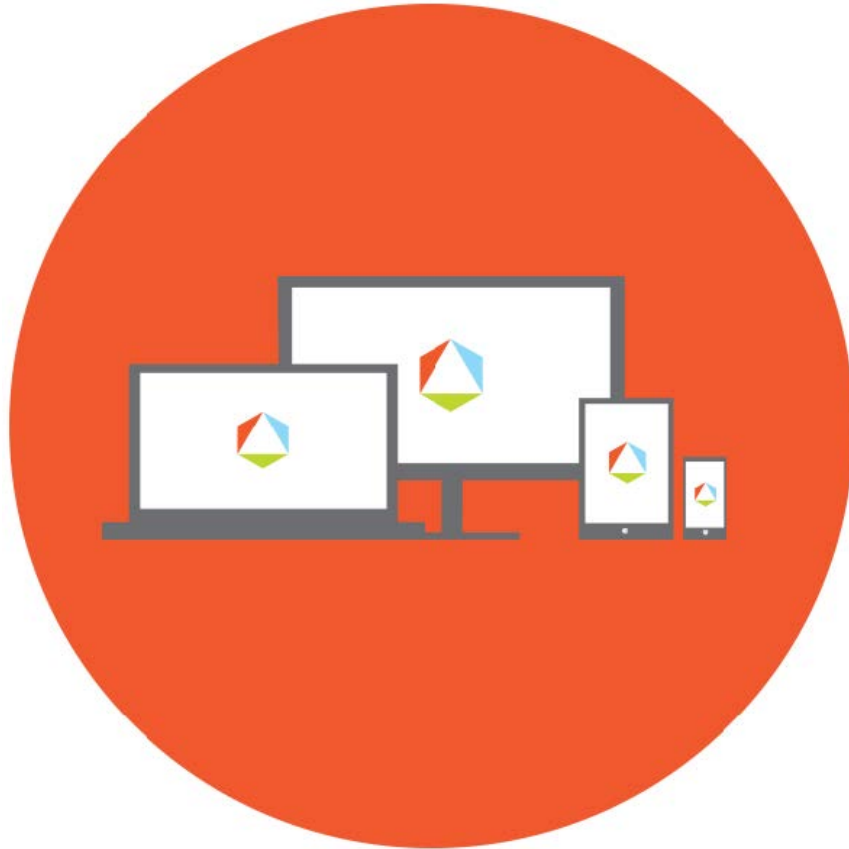




FIRSTPATH
AUTISM



Data Sheet
Reading Comprehension
www.firstpathautism.com



Reading Comprehension

Receptive Discriminative Stimulus (SD): Clinician will ask Child question (e.g. Clinician reads 2 pages from a book. Then asks "What kind of animal is Clifford?")

Correct Response: Child will provide appropriate response (e.g. "A dog.")

Target	Intro MT*	Mastery RR**	Target	Intro MT*	Mastery RR**
1. What			21.		
2. Who			22.		
3. Where			23.		
4. When			24.		
5. Why			25.		
6. How			26.		
7. 2 "Wh" questions			27.		
8.			28.		
9.			29.		
10.			30.		
11.			31.		
12.			32.		
13.			33.		
14.			34.		
15.			35.		
16.			36.		
17.			37.		
18.			38.		
19.			39.		
20.			40.		

* **Intro MT:** The date the target was introduced to the child

** **Mastery RR:** Is the date the child completed 3 consecutive random rotation trials at with 80-100% independence.

Maintenance: When all targets are mastered, reduce frequency of the presentation of the program to child systematically, ensuring that the child maintains skills by maintaining mastery scores of 80-100% before decreasing frequency further. (e.g. 5 times per week to 4 times per week for a month, to 3 times per week for a month to 2 times per week for a month, to once a week for a month, to generalized settings.)